



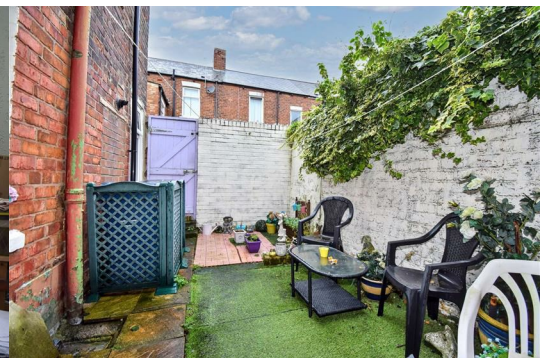
5 Arthur Street

Jarrow, NE32 5AJ

£159,950



Delighted to offer this four bedroom period Terraced Home, perfectly positioned for the town centre, supermarkets, Metro and all the facilities on offer, yet in this lovely quiet spot. The home offers potential for an incoming buyer to stamp their personality on it, comes with a modern fitted kitchen, two reception rooms, the four bedrooms and a bathroom with a four piece suite. Benefits include gas central heating and double glazing. Viewing a must to see the potential, space and qualities of this home.



Entrance lobby

Parquet floor and through to

Entrance hall

Stairs to the first floor, laminate floor and a radiator

Living room 14'7" x 13'6" (4.47 x 4.12)

Italian Marble style fire surround with a gas fire, ceiling rose and coving, laminate floor and a radiator. Double Doors to

Dining room 14'6" x 12'7" (4.43 x 3.85)

Louis Adamstyle fire surround , dado rails, laminate floor and a radiator

Kitchen breakfast room 19'1" x 8'10" (5.83 x 2.7)

Fitted with a range of wall and base units with contrasting work surfaces housing a gas hob and gas oven with filter hood over, sink unit, tiled floor and a door to the yard.

First floor

Landing and half landing, original fitted cupboards.

Bedroom 1 14'6" x 11'6" (4.43 x 3.52)

Fitted wardrobes and storage, radiator

Bedroom 2 13'0" x 11'5" (3.98 x 3.50)

Fitted wardrobes with overhead storage, laminate floor and a radiator

Bedroom 3 8'11" x 6'9" (2.74 x 2.06)

Laminate floor and a radiator

Bedroom 4 11'0" x 5'10" (3.37 x 1.80)

Fitted wardrobes with storage over, radiator

Bathroom 9'8" x 5'10" (2.95 x 1.79)

A four piece suite comprising a bath, wash basin and WC, corner shower enclosure with an electric shower, tiled walls and floor, radiator

External

Front garden area and a rear patio yard with synthetic grass and patio area.

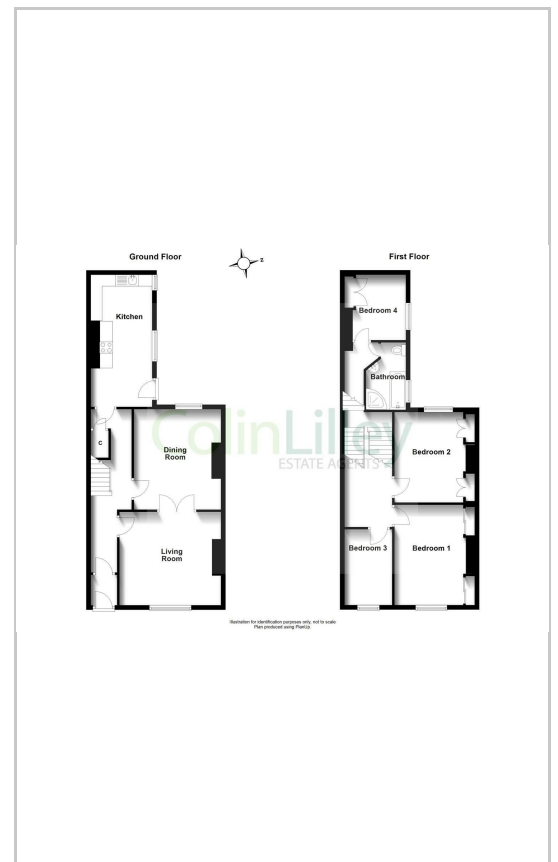
Note

Freehold Title, Council Tax Band A, Mains Services Connected, Flood Risk very low. Broadband Basic 17 Mbps, Superfast 80 Mbps, Ultrafast 1000 Mbps. Satellite/Fibre TV Availability BT, Sky and Virgin. Mobile Coverage O2, Vodafone, EE and Three all likely.

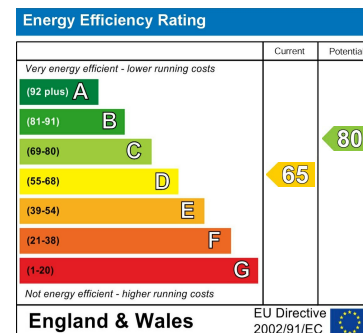
Area Map



Floor Plans



Energy Efficiency Graph



These particulars, whilst believed to be accurate are set out as a general outline only for guidance and do not constitute any part of an offer or contract. Intending purchasers should not rely on them as statements of representation of fact, but must satisfy themselves by inspection or otherwise as to their accuracy. No person in this firms employment has the authority to make or give any representation or warranty in respect of the property.